

**User's Manual of BTGP-38KM**  
**Bluetooth GPS Data Logger**

**V1.0**

## I Instruction to Product

### 1. Summary

BTGP-38KM, a high-tech product combines the advanced Bluetooth technology and GPS technology. Through, Bluetooth technology, you can receive and storage GPS data through intelligent mobile phone, PDA, laptop and desktop. Can be used for location、 navigation、 read the history of track records, and other applications



### 2. Feature

- 65 Channels GPS + 38400bps baud Bluetooth transmission + Data Logger
- 8M Bytes flash memory for data logging, with that stores up to 300 hours' data records
- The 38KM is capable of keeping up to 90000 records position, including longitude, latitude, and speed, UTC, tag data
- The location histories of 38KM can be used incidental application software GPS Track Tagger, pass the internet, are read on the Google Map
- Support standard NMEA-0183 at 38400 bps baud rate
- Bluetooth version 2.0 compliant, Bluetooth devices with Serial Port Profile (SPP)
- Charger circuitry and battery socket for NOKIA Li-ION battery (820mA), About 18.5 hours of operation
- In actual use, can automatically shut down Bluetooth to save the power function
- 38KM has passed CE, FCC, ROHS certification

### **3. Technical Index**

#### **General Index**

Receivable frequency L1, 1575.42MHz

C/A code 1.023MHz

Channel 65

#### **Sensibility**

Search -151dBm

Track -160dBm

#### **Precision**

Location 7m CEP 90% , 3m CEP 50%(SA OFF)

Velocity 0.1m/s

#### **Location time**

Hot startup 1s, average

Warm startup 35s, average

Cold startup 40s, average

#### **Dynamic condition**

Altitude Max 10 km

Horizontal speed Max 515m/s

Acceleration Max 4g

#### **GPS protocol**

NMEA-0183 ASCII protocol

Default NMEA GGA, GSA, GSV and RMC, (VTG, GLL and RMS optional)

9600bps baud rate, 8 data bits, 1 stop bit, no check bit

#### **Bluetooth index**

Bluetooth code V2.0+EDR

Emission power Class 2 (4dBm max)

Receiving sensibility -80dBm

Communication distance 10m typical (free space)

Profile Communication Profile Serial Port Profile (SPP)

### **Power consumption**

Working current about 60mA average

Working voltage 3.7V ~ 4.2V

Chargeable voltage 5.5V

### **Battery**

Recharge time 2.5hrs typical

Working time about 18.5hrs, track after the charging is full

### **Environment**

Working temperature -40 to +85

Storage temperature -40 to +150

## **II Hardware Features**

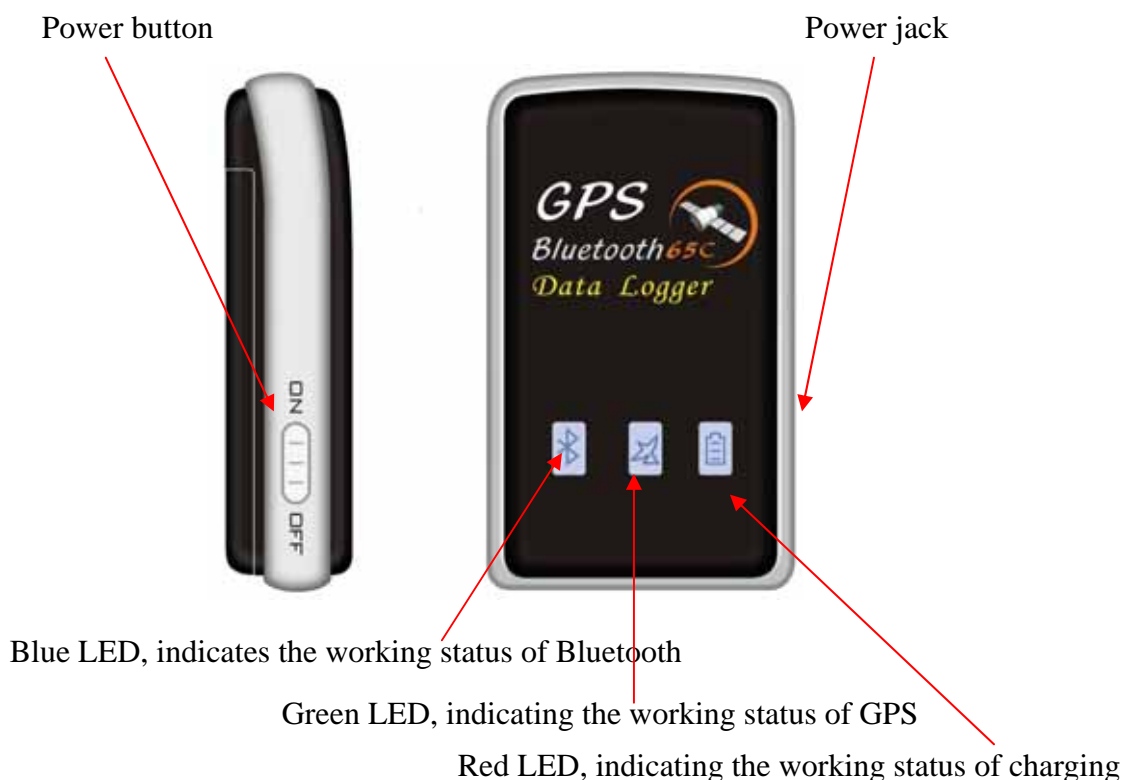
**1. Size:** 72.8(L) x45.8 (W) x18.8 (H) mm

**Wight :** 70g

### **2. Packing list**

1. Main unit	1
2. Chargeable li-battery	1
3. User's manual	1
4. Home charger ( or Car charger )	1

### 3. Description



### 4. LED status

LED	Status	Description
Green LED	Three second a flash	GPS position no fixed
	One second a flash	GPS position fixed
Blue LED	Fast flash indicates	Bluetooth in stand-by mode
	Slow flash indicates	Bluetooth in connection
Red LED	Constant on	Indicates: it is under charging
	Off	Charging is completed

## III Operation Instruction

### 1. Load battery

Open the cover of battery door, and load the battery in right direction. Close the battery door...

## **2. Charge**

Plug the AC end of the charger into main power supply socket. Plug the DC charger into the hole on the product. Then, the red LED turns on, indicating it is charging. In about 2.5hr, red LED turns off and the charger is completed.

Note: To maximize the lifetime of the battery, please charge it continuously for at least 10 hr for the first time.

## **3. Bluetooth dongle**

If there is no Bluetooth dongle, you need to buy Bluetooth dongle. When you purchase Bluetooth dongle, the business will give you a Manual, be sure to read carefully.

## **4. Set up wireless connection**

When 38KM's power is on, the green LED turns on, indicating the state of location. Blue LED swiftly flashes, indicating that it enters to matching state.

Connect to Bluetooth with your computer's USB port, then, open the BlueSoleil software (Simple to use the BlueSoleil software, you can view the Track Tagger's self-help documents; the details can view the BlueSoleil software's self-help documents) on the computer, then, you input search command on your Bluetooth device. When it is searched out, select "BTGP-38DL" and then input the code"0000", so that the matching is complete. Figure 1

Based on energy saving considerations, when used in the track of storage, Bluetooth does not work, five minutes after the start-up did not establish a connection, automatically go into standby status. When the Bluetooth connection to be established, according to the short boot into the power key to matching state.

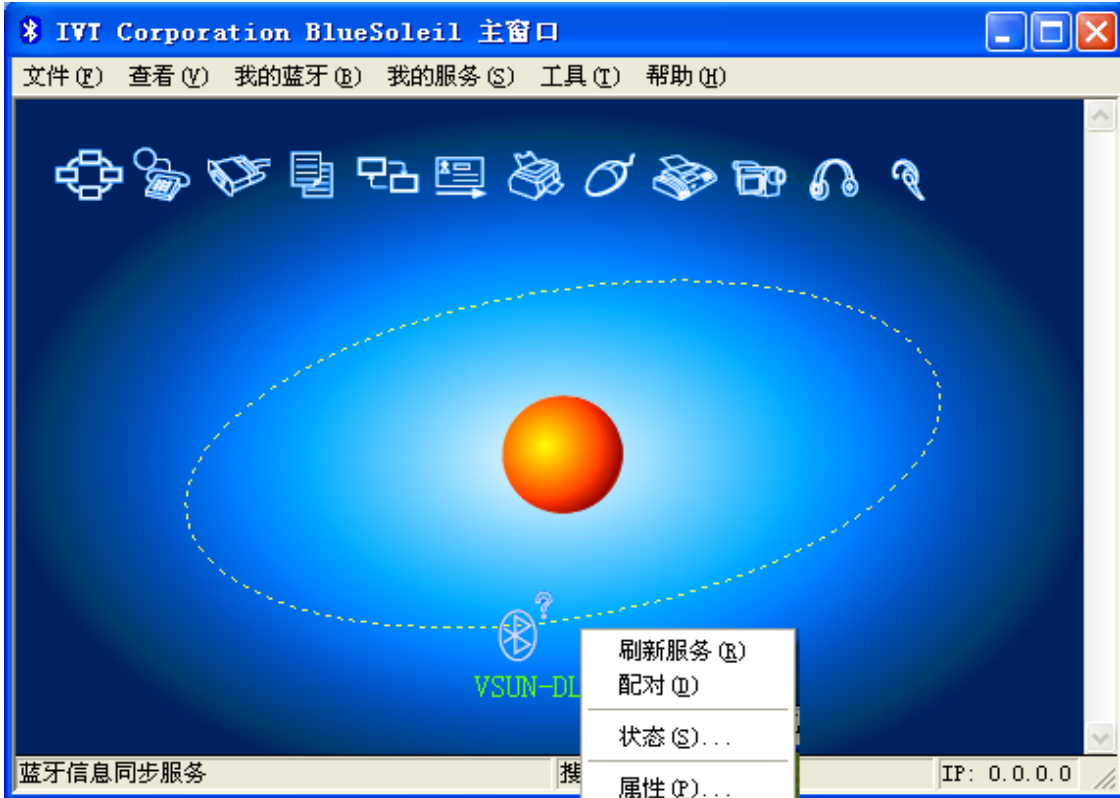


Figure 1

## IV Software installation

Open the CD-ROM, double-click the setup.exe. It will open the installation wizard (Figure 2). Click the Next button, the program will lead users to install the GPS Track Tagger, vcredist\_x86, GoogleEarthPlugin.

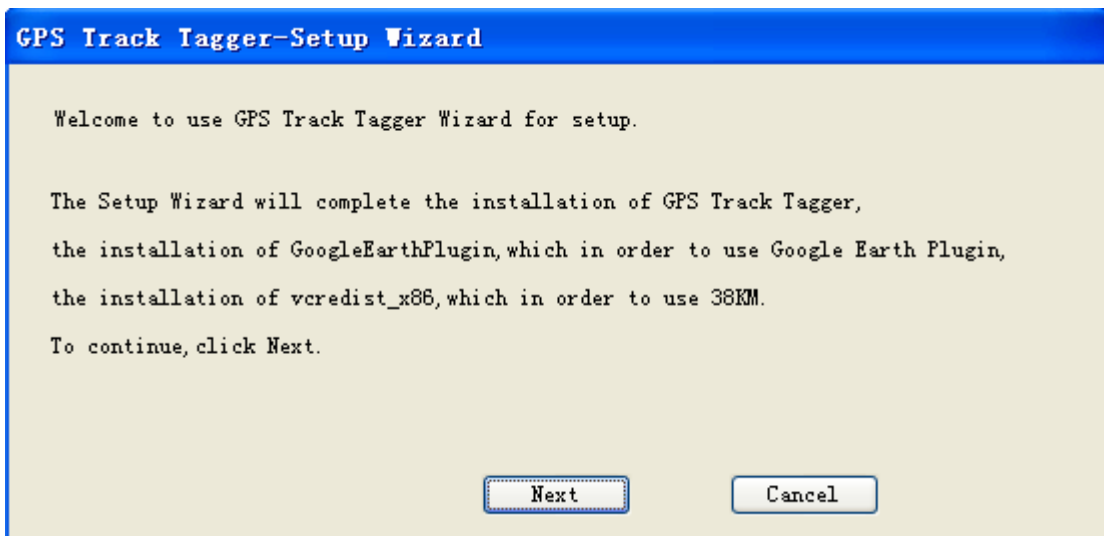


Figure 2

## V View the track records

1. Open the GPS Track Tagger software, read the track. (About the GPS Track Tagger software's use, you can view the operating manual of the help documents in software)
2. Double-click track item in the track list, the map will show you the current track. (Figure 3)

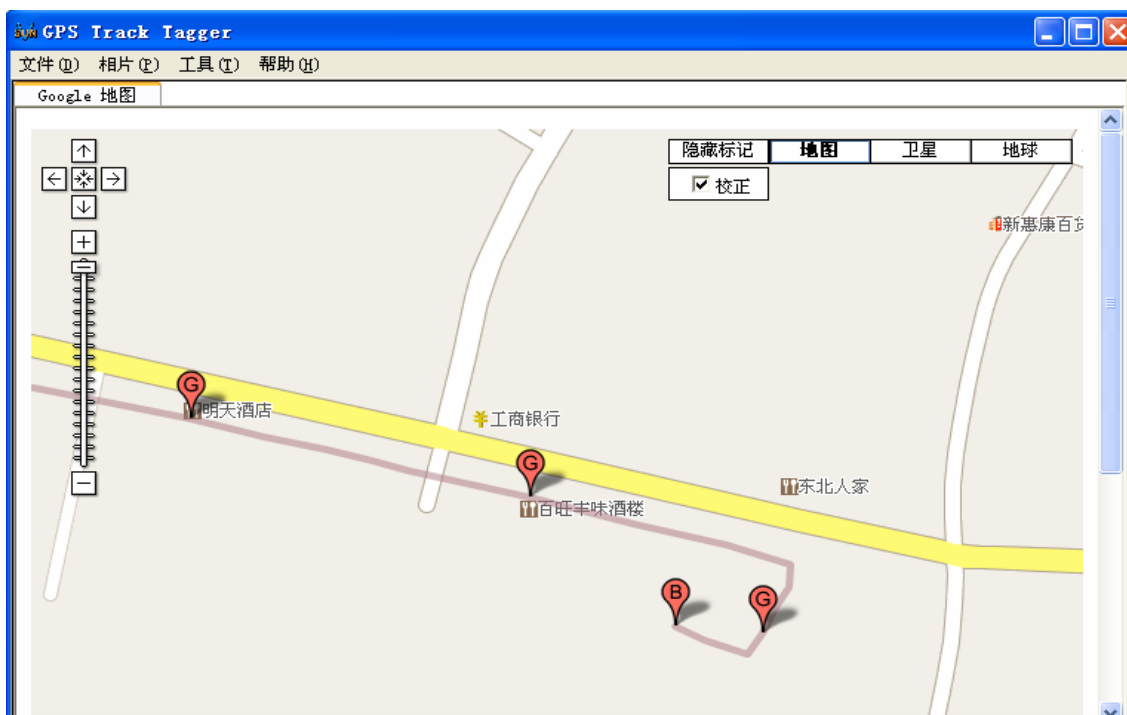


Figure 3